



HOTEL *Alexandra*



COMING IN EARLY 2020



Hotel Lobby

## About Us

Hotel Alexandra is a design-led hotel situated at the heart of Hong Kong Island on the North Point waterfront, exquisitely designed melding timeless Victorian elegance and modern concepts.

Newly built and scheduled to open its doors in early 2020, the hotel is the newest addition to the line of established hotels managed by Harbour Plaza Hotels & Resorts. Offers cosy guest rooms and suites, enchanting outlets, fitness centre, outdoor swimming pool, versatile function facilities such as a grand ballroom and customizable meeting spaces.

---

## Hotel Foyer & Lobby

Bright and uplifting space, featuring grand chandeliers, floor to ceiling windows and doors, Victorian tiled flooring and expansive mirrors. Adorned by the warmth of rich gold, elegant black and hints of red.

## Design-led

Inspired by Victorian decadence, silks and velvets, grand chandeliers, engraved golden doors and fixtures, evocative of Alice's Adventures in Wonderland.



Hotel Alexandra on the North Point waterfront

# Rooms & Suites

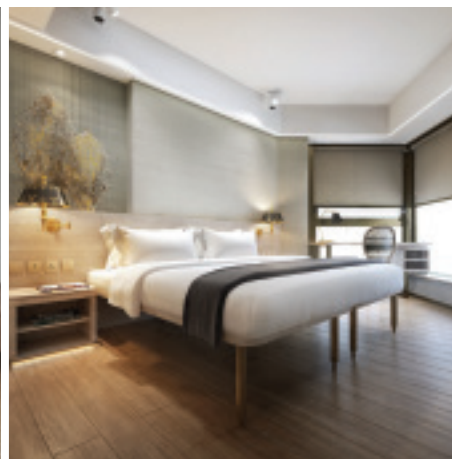
840 charming guest rooms and suites with many overlooking the spectacular Hong Kong skyline and Victoria Harbour views. A selection of card suit room categories ranging from 2 persons 'Diamond' to 6 persons 'Spade' and luxury 'Queen & King Suites', with choice of double or twin rooms and writing desk or bed sofa. A host of connection rooms for family and group travellers, as well as spacious suite options for the long staying or discerning.



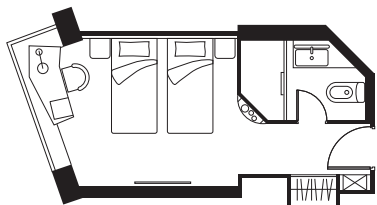
Clover Twin Bedroom



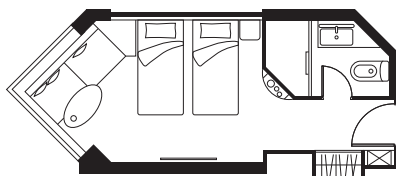
One-Bedroom Suite



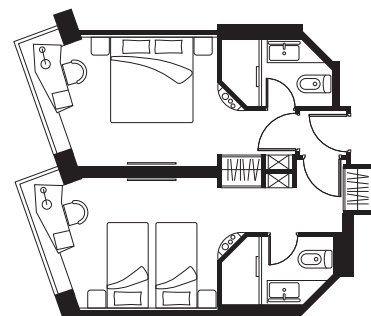
Diamond Double Bedroom



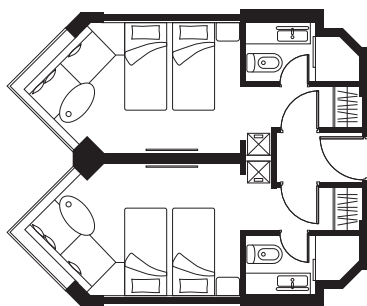
Diamond (max 2 pax)  
Twin / Double Room  
with Writing Desk



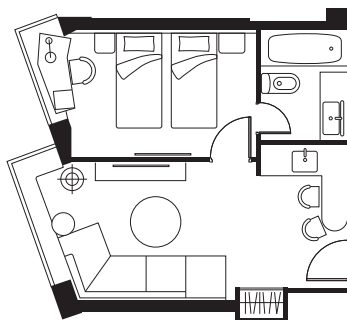
Clover (max 3 pax)  
Triple Room  
with Bed Sofa



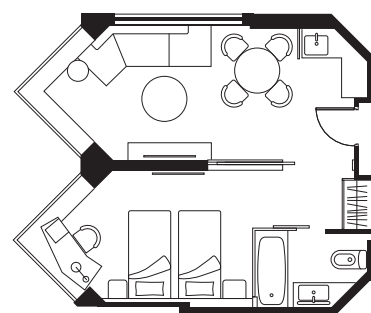
Heart (max 4 pax)  
Quadruple Room  
with Writing Desk



Spade (max 6 pax)  
Quadruple Room  
with Two Bed Sofa



Queen Suite  
Twin / Double Room  
Sofa and Living Area  
with Coffee Table

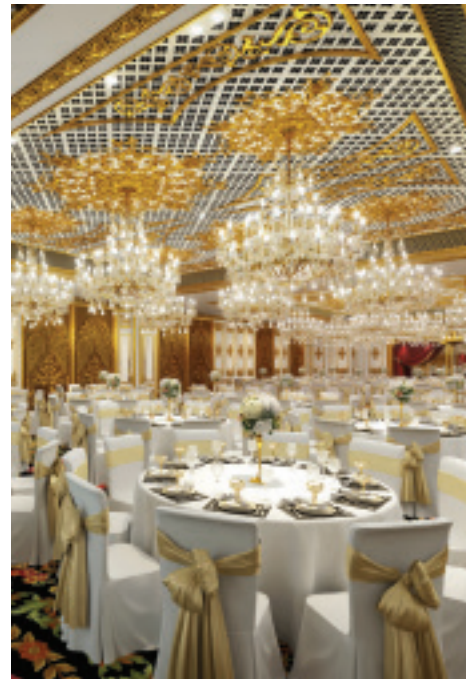


King Suite  
Twin / Double Room  
Sofa, Living Area and  
Dining Area

# Weddings & Events

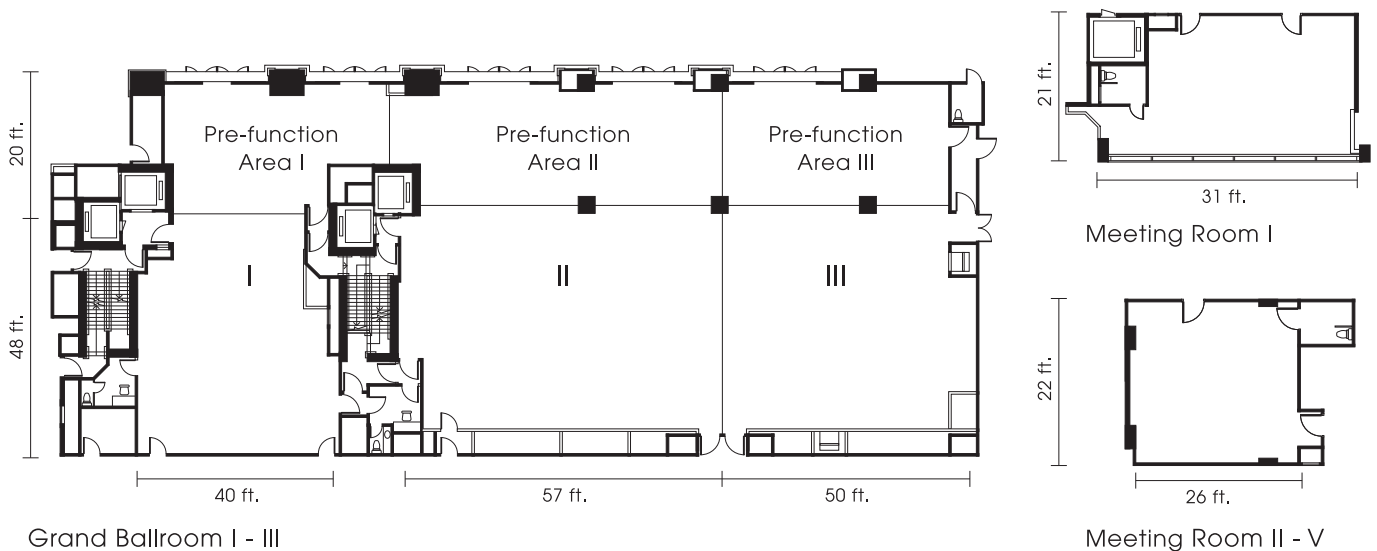
## Grand Ballroom

- Stunning ballroom to host medium to large-scale celebrations, weddings, private parties, cocktail functions and meetings. Measuring an expansive 935 m<sup>2</sup> and featuring 4 m ceiling height
- Configurable into 3 venues for more intimate gatherings
- A pre-function space measuring 275 m<sup>2</sup>



## Event Venues

- 5 meeting spaces suitable for intimate to medium sized social gatherings, business meetings or private celebrations
- Up to 60 m<sup>2</sup> and up to 2.3 m ceiling



Function Space	Length	Width	Length	Width	Area		Height		Cocktail	Banquet	Classroom	Theatre	U-Shape
	Meter	Meter	Feet	Feet	m <sup>2</sup>	ft <sup>2</sup>	m	ft	pax	table	pax	pax	pax
Grand Ballroom I	12	15	40	48	180	1,920	4	13	120	10	90	160	46
Grand Ballroom II	17	15	57	48	255	2,730	4	13	180	13	120	220	58
Grand Ballroom III	15	15	50	48	225	2,400	4	13	160	12	110	200	52
Grand Ballroom II - III	32	15	107	48	480	5,130	4	13	340	25	230	420	118
Grand Ballroom I & Pre-function Area I	12	21	40	68	255	2,720	4	13	180	13	120	220	58
Grand Ballroom II & Pre-function Area II	17	21	57	68	362	3,870	4	13	250	18	180	320	58
Grand Ballroom III & Pre-function Area III	15	21	50	68	318	3,400	4	13	220	16	160	280	52
Grand Ballroom II - III & Pre-function Area II - III	32	21	107	68	680	7,270	4	13	470	34	340	600	112
Grand Ballroom I - III & Pre-function Area I - III	44	21	147	68	935	9,990	4	13	650	47	460	820	-
Meeting Room I	9	6	31	21	60	650	2.1	7	40	3	30	60	24
Meeting Room II / III / IV / V	8	7	26	22	53	570	2.3	7.6	35	2	25	50	19



## Café A

An exciting array of delectable International dishes await at this all-day dining and buffet restaurant.

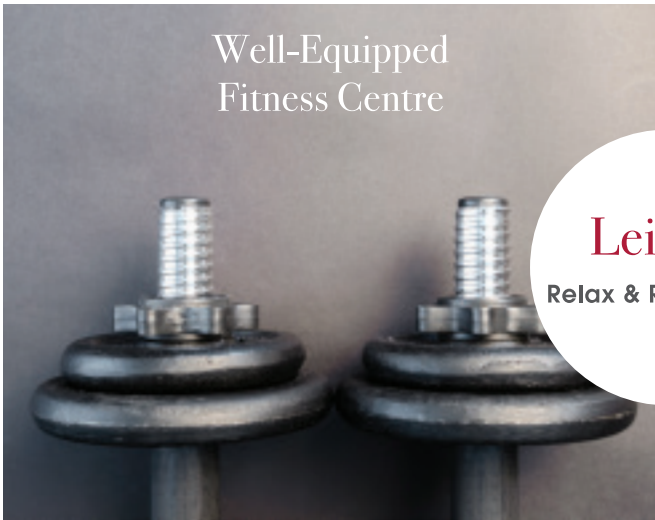
## Dining

Food & Beverage



## Bar & Lounge

Linger a while over drinks and refreshments prepared by our dedicated chefs.



## Well-Equipped Fitness Centre

## Leisure

Relax & Rejuvenate



## Scenic Outdoor Swimming Pool

## Location

- Situated at the Hong Kong Island on the prominent North Point waterfront with spectacular views of Hong Kong's famous Victoria Harbour and the city skyline
- Easily accessible by car and public transportation through the new Central-Wan Chai Bypass Tunnel, providing a unique stay close to the Central business area, with a wide range of shopping, gastronomic and entertainment options at the nearby Causeway Bay and Wan Chai districts
- Approximately 2-mins walking distance to/from MTR Fortress Hill Station, 10 minutes from Hong Kong Convention and Exhibition Centre and 40 minutes from Hong Kong International Airport



# Transportation and Points of Interest

From	Time min	By
Asia World-Expo	50	Taxi
Hong Kong Disneyland	40	MTR
Hong Kong International Airport	40	MTR
The Peak	25	Taxi
Airport Express Hong Kong Station	20	MTR
Ocean Park	20	MTR
Repulse Bay	20	Taxi
Stanley Market & Local Beaches	20	Taxi
Tsim Sha Tsui Shopping District	15	MTR
Central Business District	10	MTR
Cityplaza Taikoo Shing Shopping Mall	10	MTR
Hong Kong Convention & Exhibition Centre	10	MTR
Lan Kwai Fong	10	MTR
Taikoo Place Business District	10	MTR
Pacific Place Shopping Mall	8	MTR
Banks / ATM	5	Walking
Causeway Bay Shopping District	5	MTR
Chinese Restaurant	5	Walking
KFC	3	Walking
Maxim's Bakery	3	Walking
McDonald's	3	Walking
Pharmacies	3	Walking
Supermarket	3	Walking
Thai Restaurant	3	Walking
Convenient Store	2	Walking
Japanese Restaurant	2	Walking
Mass Transit Railway Fortress Hill Station (Exit B)	2	Walking
Starbucks	2	Walking
Oi! Street Art Space	1	Walking



## Address

32 City Garden Road  
North Point, Hong Kong  
(MTR Fortress Hill Station, Exit B)

## Contact Us

Tel: (852) 3893 2888 Fax: (852) 3893 2999  
Email: [sales@hotelalexandrahk.com](mailto:sales@hotelalexandrahk.com)  
Reservation: [rsvn@hotelalexandrahk.com](mailto:rsvn@hotelalexandrahk.com)  
Web: [www.hotelalexandrahk.com](http://www.hotelalexandrahk.com)